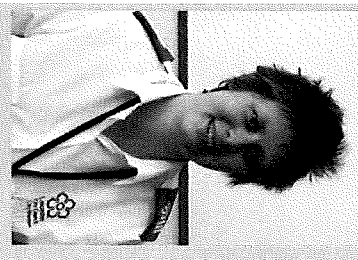


# CITY WARDEN SERVICE



**Charlotte Williams-Glover**  
Email: [citywarden@leicester.gov.uk](mailto:citywarden@leicester.gov.uk)  
Website: [www.leicester.gov.uk](http://www.leicester.gov.uk)

**Leicester City Wardens**

**City Wardens**  
Phoenix House  
1 King Street  
Leicester  
LE1 6RN

# BEAUMONT LEYS

These are the main issues that the City Wardens can help with:

- ▣ Educating the public and raising awareness of environmental crimes
- ▣ Enforcement work on the following issues:
  - ▣ Littering
  - ▣ Dog Control – Dog fouling, dogs on leads, dog exclusion zones
  - ▣ Bins on the Street (Domestic and Commercial)
  - ▣ Free Distribution of Printed Material
    - ▣ Fly-Posting
    - ▣ Small Scale Fly-Tipping
    - ▣ Graffiti
  - ▣ Vehicles for Sale on the road
  - ▣ Repairing Vehicles on the road
  - ▣ Failure to produce Waste Transfer Documents
    - ▣ Street Litter Control Notices
    - ▣ Skips & Scaffolding
    - ▣ Untidy Alleys and Gardens



**CITY WARDENS WORKING WITH YOU TO IMPROVE THE CITY'S ENVIRONMENT**

Leicester city council have teamed up with all the neighbouring local authorities in Leicestershire to bring awareness surrounding waste and Fly tipping. Leicestershire councils deal with 12,000 fly tipping incidents per year. #fonly we had enough evidence to prosecute every fly-tipper.

**Fly-tipping is a crime Fly-tipping is a crime Fly-tipping is a crime**

**I was fined £400**  
Flying Glass and other debris from my car window.

**I was fined £400**  
Rubbish in the street. I was fined £400 for not taking my rubbish to the recycling bin.

**I was fined £400**  
I was fined £400 for not taking my rubbish to the recycling bin.

**I was prosecuted and fined £1000**  
I was prosecuted and fined £1000 for not taking my rubbish to the recycling bin.

This is Claire, Mo, David and Sue they each were fined for fly-tipping.  
 Claire left bags on the floor at a recycling bank.  
 Mo left his fridge out on the footpath in front of his home.  
 David dumped his in a quiet country lane.  
 Sue paid some one to take her waste they weren't licensed and fly-tipped her rubbish.



**ADVICE FOR RESIDENTS**

Householders are legally responsible for all household waste produced on their property. Most household waste can be disposed of in your bags or wheeled bin.

- ❖ If you need to dispose of large items such as sofas, fridges there are several ways to do this legally.
  - ❖ Take large items to your council run tip. Find out about opening times on line.
  - ❖ Consider hiring a skip. They can be value for money and you don't need a permit if its on your own property.
  - ❖ Leicester city council can dispose of your large waste items as part of the bulky waste collection service.
  - ❖ You can subscribe to a garden waste collection for an annual fee.
- Find out more at [www.lesswaste.org.uk](http://www.lesswaste.org.uk)

**Advice for businesses**

Under the Environmental Protection Act, every business has a duty of care when it comes to dispose of its waste. If you are not meeting your legal responsibilities it could result in a fine or imprisonment.

- **Here are a few tips**
  - It is a legal requirement for businesses to use a licensed waste carrier to remove their waste – check they are registered.
  - If you run a business from home you will still need to dispose of your waste correctly – you should not use your home waste collection.
  - Provide a written description of your waste to the company collection your waste
  - Keep signed copies of transfer notes for 2 years.
  - Take action if you think your waste is being mishandled by those who remove it. You could be fined if your waste is fly tipped.
- Find out more by visiting [www.rigitwastemgmtplace.com](http://www.rigitwastemgmtplace.com)

**CITY WARDEN SERVICES**

**UPDATE**

The fly tipping on bodkin walk has been cleared. Also the car for sale near the school on Beauville Drive.

Fly tipping letters have been sent to residents on cross hedge close.

4 Community protection warnings have been issued and all completed.

New no fly tipping signs have been put up on Portmore Close.

